



New West Gypsum Recycling Inc.

38 Vulcan Street
New Westminster, BC
V3L 5T7
(604) 534-9925

LOAD INSPECTION PROCEDURE

Purpose:

The purpose of this document is to provide guidance on inspecting loads of drywall entering the facility to determine the quality and condition of the load.

Preamble:

Determining the content of a load is critical in assessing whether a load can be accepted at New West Gypsum Recycling Inc. and, if accepted, whether the load can be processed or must be routed to disposal.

Forms:

A number of forms have been developed to both document and to enable an audit trail for loads received and rejected. The documents are:

- Load Screening Procedure
- Load Declaration
- Load Declaration in Punjabi, Mandarin & Vietnamese
- Load Declaration – Long Term Project
- Long Term Project List
- Load Manifest
- Multipoint Pickup Manifest
- Load Rejection Form
- Load Rejection List
- Sample Clearance Letter

Manufacturer's Date Stamps:

Manufacturer's Date Stamps are black, blue or purple (all are really black, the different colours seem to be a result of the printer running low on ink). Acceptable date stamps are NEVER green. The date stamp can be on the front, back or edge of the board.



Decision Tree:

The decision tree for load acceptance is attached. As you can see from the decision tree, loads will be split into two streams, namely:

- Loads with manufacturer's date stamps; and,
- Loads without manufacturer's date stamps with and without potential asbestos containing materials ("ACMs").

Loads that are mixed – i.e. contain both board with and without manufacturer's date stamps are accepted as if the load DOES NOT have date stamps – and require analytical paperwork confirming that the materials are non-detect for asbestos.

Materials with manufacturer's date stamps can be processed and shipped to our main end user.

Materials without manufacturer's date stamps are kept separate and shipped off-Site to other end users.

Details of the Procedure:

Loads with manufacturer's date stamps can be accepted if the load is consistent (i.e. the same colour / condition throughout the load).

Inspect in the
Vehicle



Loads without manufacturer's date stamps can only be accepted if the load is:

- Consistent throughout (i.e. same colour / condition); and,
 - Has no ACMs (i.e. no texture coat or drywall joint compound); or,
 - Has analytical reports indicating that the potentially asbestos containing drywall related components are non-detect for asbestos; or,
 - Has a Hazardous Buildings Material Assessment that indicates asbestos was found in drywall related components and:
 - The load contains none of the asbestos containing materials listed in the Assessment (i.e. insulation, flooring, roofing); or,
 - The paperwork includes a Clearance Letter indicating that the asbestos containing materials listed in the Assessment have all been removed.

Consistent Load



Loads that do not meet the requirements are rejected. All rejected loads are documented on a Load Rejection Form (copies given to customer & retained).

Inconsistent Load



In some cases, the customer, when details of the requirements are explained, may decide to leave the facility before crossing the scale.

Transfer Stations:

Loads from Transfer Stations are screened using the same procedure as loads from individual customers. To aid Transfer Stations to provide the necessary paperwork, Load Manifests and Multipoint Pickup Forms were developed. Loads from Transfer Stations must be all of one type of material (i.e. all date-stamped OR all non-date stamped). Mixed loads are accepted only as non-date stamped and must be accompanied by analytical paperwork. Note that the Manifests require a listing of the source addresses for all portions of the load. This would mean that for load containing non-date stamped materials – analytical reports must be provided for each portion of the load.

Long Term Project:

In some cases, a demolition project may occur over an extended period of time (i.e. a Long Term Project). If such a project follows the standard procedure, analytical data and clearance letters would need to be provided with each and every load. This is considered to be a significant burden to both the customer and New West Gypsum Recycling. To address this, the Long Term Project acceptance system was developed.

To enable a Long Term Project, the customer advises the Scale Clerk that they are seeking approval for acceptance of materials from a Long Term Project. To be accepted, there:

- Must be at least five loads from the same address;
- All loads must be the same (i.e. all date or all non-dated materials); and,
- If the loads are non-dated materials:
 - The Hazardous Building Materials Assessment indicates all potentially asbestos containing drywall component materials are non-detect for asbestos; or,
 - A Clearance Letter is included that indicates that all materials that were identified in the Hazardous Building Materials Assessment have been removed.

If these conditions are met, the Scale Clerk enters the Long Term Project Number on the Long Term Project List and gives the customer multiple copies of the Long Term Project Declaration form. On the first copy of the Long Term Project Declaration, the Scale Clerk enters the Long Term Project Number.

The first and all following loads are subjected to inspection as indicated in the Decision Tree. All loads received under the Long Term Project must have the Long Term Project Number entered on the Long Term Load Declaration. A tally of loads received is also maintained on the Long Term Load Project List.

Analytical Reports:

Analytical Reports:

- Must be less than 6 months old;
- Be provided at the time the load is received; and,
- Must indicate the address of the home / building where the samples were obtained.

Clearance Letters:

Clearance Letters must:

- Meet the WCB requirements;
- Include the property address; and,
- Must indicate that all asbestos containing materials identified in the Hazardous Building Materials Assessment were removed.

A sample Clearance Letter has been developed and can be provided to customers.

Busy Times:

During busy times it may be necessary for a company representative to meet customers in the waiting line before they enter the facility. This representative can explain to the customers the material acceptance requirements and perform a 'pre screening' function. Any loads found to be unacceptable are to be recorded on the Reject Load List. Final acceptance of a load is left to the Yard Operator.

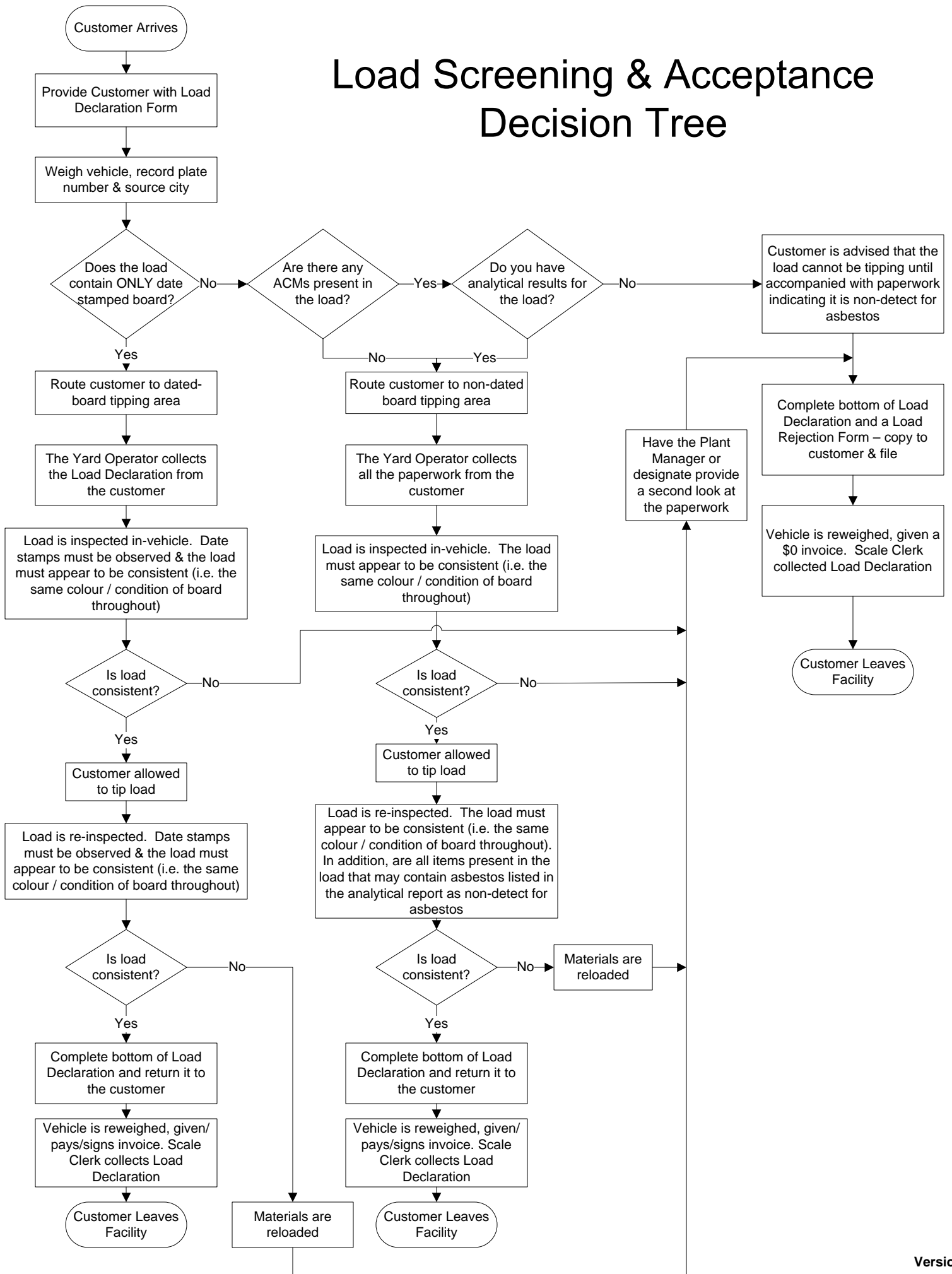
**Paperwork:**

When a customer leaves the facility, one of the following applies:

- The customer's information is entered on the Reject List;
- The customer receives a Load Rejection Form and a \$0 invoice. A copy of the Load Rejection Form is filed with the office copy of the invoice;
- The customer leaves after paying their invoice and leaves a copy of the Load Declaration with the office copy of the invoice;
- The customer leaves after paying their invoice and leaves a copy of their analytical results, Load Declaration with the office copy of the invoice; or,
- The customer leaves after paying their invoice and leaves a copy of their Hazardous Building Materials Assessment, Clearance Letter and Load Declaration with the office copy of the invoice.

These are the ONLY sets of paperwork that are possible under this procedure.

Load Screening & Acceptance Decision Tree





New West Gypsum Recycling Inc.

38 Vulcan Street
New Westminster, BC
V3L 5T7
(604) 534-9925

LOAD INSPECTOR PROCEDURE

Purpose:

The purpose of this procedure is to provide direction on the role and duties of the In-Yard Load Inspector. The overall purpose of the In-Yard Load Inspector is to complete the final qualification of loads for disposal of drywall at the New West Gypsum Recycling ("NWGR"), thereby only allowing those who will meet the disposal requirements from tipping drywall at the facility.

Role & Duties:

The Load Inspector is to provide customers wanting to dispose of drywall NWGR facility with:

- The requirements for disposal of drywall at NWGR;
- A copy of the Drywall Declaration & Acknowledgement form (if not provided by the on-Street Load Inspector);
- A detailed inspection of the load both in the vehicle and following tipping for consistency;
- A detailed review of analytical results for loads containing non-manufacturer's date stamped materials;
- A copy of the list of Asbestos Testing Laboratories and Asbestos Abatement Companies for loads containing non-manufacturer's date stamped materials that arrive without analytical results or for loads indicating that drywall related compounds contain asbestos;
- To issue Rejection Forms to any customer who's load does not meet the disposal requirements; and,
- Stay in communication with the Scale Clerk and provide assistance to customers at the intercom when necessary.

The Load Inspector must remember that they are the represent NWGR to customers. As such, they must act and be seen to be acting in a way that is positive representation of NWGR.

During times when there are no vehicles in the yard, the Load Inspector will:

- Communicate with the Loader Operators to push up the Date Stamped and Non-Date Stamped piles;
- Wash the yard to maintain the area as clean as possible. Washing should be done to push the mud toward the drains (located in the wheel wash, south of the wheel wash, outside door 2 and near the employee parking lot) and not toward the scale; and,
- Clean up nails and screws with the magnet.

Restrictions:

The Load Inspector:

- Can climb on vehicles to perform inspections as long as the climbing can be done safely and is less than 2 m in height. Greater heights require fall protection;

- If the analytical results indicate that the portions of the load contain asbestos, the Load Inspector must not handle or disturb the drywall present in a customer's load. The load must be rejected.



New West Gypsum Recycling Inc.

38 Vulcan Street
New Westminster, BC
V3L 5T7
(604) 534-9925

ON-STREET LOAD INSPECTOR PROCEDURE

Purpose:

The purpose of this procedure is to provide direction on the role and duties of the On-Street Load Inspector. The overall purpose of the On-Street Load Inspector is to prequalify loads for disposal of drywall at the New West Gypsum Recycling ("NWGR"), thereby only allowing those who will likely meet the disposal requirements from entering the facility.

Role & Duties:

The On-Street Load Inspector is to provide customers wanting to dispose of drywall NWGR facility with:

- The requirements for disposal of drywall at NWGR;
- A copy of the Drywall Declaration & Acknowledgement form;
- A pre-inspection of the load;
- A preliminary review of analytical results for loads containing none manufacturers date stamped materials;
- A copy of the list of Asbestos Testing Laboratories and Asbestos Abatement Companies for loads containing none manufacturers date stamped materials that arrive without analytical results or for loads indicating that drywall related compounds contain asbestos;
- To record the license plate numbers and vehicle descriptions of all vehicles who leave the line-up without entering the NWGR facility; and,
- Stay in communication with the scale clerk.

The On-Street Load Inspector must remember that they are the first representatives of NWGR that customers meet. As such, they must act and be seen to be acting in a way that is positive representation of NWGR.

During times when there are no vehicles in the yard, the On-Street Load Inspector will:

- Assist the In-Yard Load Inspector with any and all duties;
- Be ready to go back to the road when a line-up is present.

Restrictions:

The On-Street Load Inspector:

- Is not permitted to climb on any vehicle to perform any aspects of their duties;
- Must not handle or disturb the drywall present in a customer's load. If inspection of the load is deemed necessary (i.e. to find a manufacturer's date stamp) on the street, the customer must open the doors of any vehicle or bin and handle all drywall. This is necessary as the drywall present in the load while the customer is on the street is deemed to be potentially asbestos containing and the handling of the material until it is determined to be non-asbestos containing is a moderate risk activity. As a result, NWGR employees can only handle the drywall on the street if they are wearing the PPE required for asbestos handling at a moderate risk level (Tyvek suit, respirator, gloves).



New West Gypsum Recycling Inc.

38 Vulcan Street
New Westminster, BC
V3L 5T7
(604) 534-9925

LOAD ACCEPTANCE CRITERIA

Purpose:

The purpose of this document is to provide guidance on the criteria for New West Gypsum Recycling (BC) Inc. to accept loads of drywall from customers and transfer stations.

Preamble:

Determining the content of a load is critical in assessing whether a load can be accepted at New West Gypsum Recycling Inc. ("NWGR") and, if accepted, how the load can be processed.

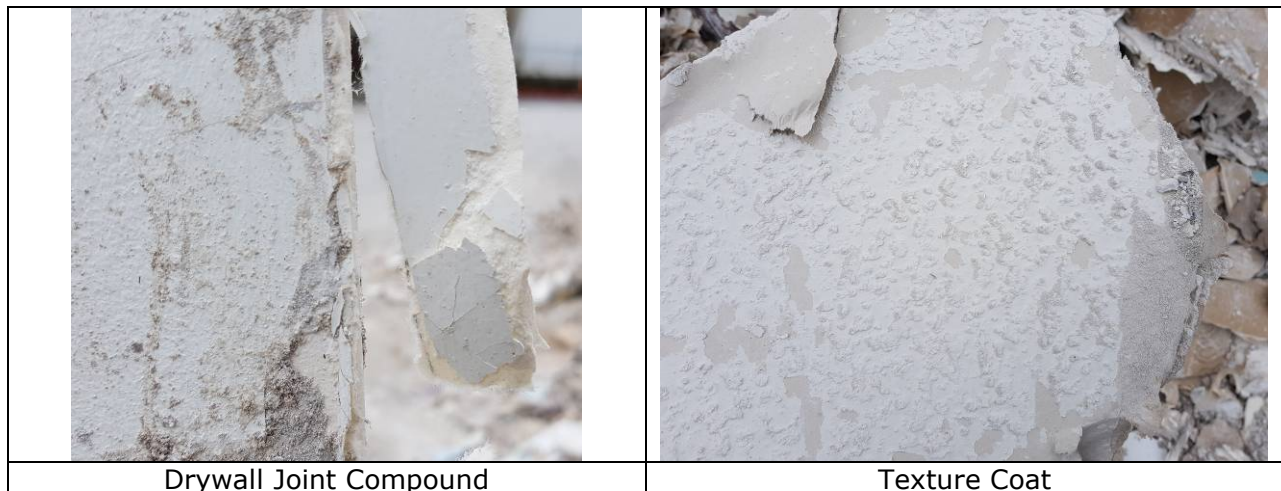
Asbestos in Drywall:

Prior to the early 1980s asbestos was used in many construction materials. Of concern to NWGR is its use in drywall related building materials. What NWGR has learned is asbestos was used in two drywall related building materials, namely:

- Drywall Joint Compound ("DJC") – Finely ground asbestos was added to increase the set time of DJC to allow applicators more time to apply the work the material; and,
- Texture Coats ("TC") – Added for two reasons:
 1. Like DJC – to increase the set time to allow greater workability; and,
 2. For structural strength of the texture coating.

It should be noted that:

- Asbestos was never added to drywall itself; and,
- Asbestos was not added for "fire protection" or other such reason.



Acceptance Criteria:

To be accepted for reprocessing at NWGR, loads of drywall must fall into one of the following four categories:

1. Loads with manufacturer's date stamps;
2. Loads without manufacturer's date stamps but with analytical from an independent laboratory showing that the DJC and TC is non-detect from asbestos;

3. Loads without manufacturer's date stamps but with analytical from an independent laboratory showing that the DJC and TC contained asbestos BUT includes a "Clearance Letter" and WorkSafeBC NOP-A confirming that the asbestos containing materials were removed (i.e. abated); and,
4. Loads without manufacturer's date stamps with and without potential asbestos containing materials ("ACMs") (i.e. the drywall in a garage or used in roofing that has never had DJC or TC applied).

Loads that are mixed – i.e. contain both drywall with and without manufacturer's date stamps will be accepted as if the load DOES NOT have date stamps – and require analytical paperwork confirming that the materials are non-detect for asbestos.

Materials with manufacturer's date stamps can be processed and shipped to our main end user.

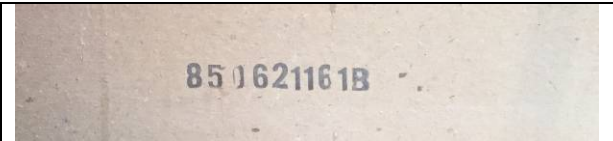
Materials without manufacturer's date stamps are kept separate and shipped off-Site to other end users.

Manufacturer's Date Stamps:

Manufacturer's Date Stamps are black, blue or purple (all are really black, the different colours seem to be a result of the printer running low on ink). A date stamp has an easily recognizable year, month and day but can be in a number of different formats (i.e yy/mm/dd, yyyy-mm-dd, etc). The date stamp can also include the plant, shift and time. Acceptable date stamps are NEVER green. The date stamp can be on the front, back or edge of the board.

Some examples of date stamps are presented in the following table:

	
---	--

Some stamps that are not manufacturer's date stamps are shown in the following table:

At the Plant:

On arrival at the plant, customers will be asked of the load is "dated".

- If Yes, the vehicle will be scaled in and the driver will be directed to the "Dated" tipping area. The load will then be inspected by the Load Inspector while still in the vehicle to determine:
 - If the load is "consistent" – meaning that the materials appear to be sourced from the same location and appear to be all "date stamped"; and,
 - For a "date stamp" on more than one piece of drywall within the load.
 If both of these conditions are met:
 - The driver is allowed to unload the materials and while unloading, the Load Inspector will ascertain that the load is consistent and that no non-dated (i.e. old) materials are contained within the load.
 - Once unloaded, the customer drives the vehicle back over the scale to be re-weighed and to pay for the tipping of the drywall.
- If No, the driver will be asked if they have "paperwork";

- If Yes, the vehicle will be scaled in and the driver will be directed to the “non-Dated” tipping area. The load will then be inspected by the Load Inspector while still in the vehicle to determine:
 - If the load is “consistent” – meaning that the materials appear to be sourced from the same location;
 - That the address shown on the Declaration is the same as the address shown on the analytical report;
 - That all potential ACMs are included on the “paperwork” (i.e. if both TC and DJC are in the load, both must be shown on the analytical report);
 - The “paperwork” must show the specific type of material analyzed (i.e. DJC or TC and not “drywall”); and,
 - That all potential ACMs are shown as non-detect on the “paperwork”; or,
 - If asbestos is shown as detected:
 - The detection is related to non-drywall related building materials (i.e. floor tile); or,
 - The “paperwork” includes a Clearance Letter and WorkSafeBC NOP-A that ascertains that the identified asbestos containing drywall related building materials were abated; or,
 - An undertaking signed by the property owner or contractor that the areas where asbestos was detected were not included in the areas renovated and therefore drywall from the identified areas is not in the load.
- If these conditions are met:
 - The driver is allowed to unload the materials and while unloading, the Load Inspector will ascertain that the load is consistent and that the conditions continue to be met.
 - Once unloaded, the customer drives the vehicle back over the scale to be re-weighed and to pay for the tipping of the drywall.
- If the load is declared as Non-ACM, the vehicle will be scaled in and the driver will be directed to the “non-Dated” tipping area. The load will then be inspected by the Load Inspector while still in the vehicle to determine:
 - If the load is “consistent” – meaning that the materials appear to be sourced from the same location;
 - That no potential ACMs are included on the drywall in the load; and,
- If these conditions are met:
 - The driver is allowed to unload the materials and while unloading, the Load Inspector will ascertain that the load is consistent and that the conditions continue to be met.
 - Once unloaded, the customer drives the vehicle back over the scale to be re-weighed and to pay for the tipping of the drywall.
- The “Paperwork” that accompanies the load may include:
 - A Hazardous Buildings Material Assessment;
 - The analytical results (all pages);
 - A Clearance Letter; and,
 - A WorksafeBC NOP-A (Notice of Project – Asbestos).

Loads that do not meet the requirements are rejected. All rejected loads are documented on a Load Rejection Form (copies given to customer & retained).

Transfer Stations:

Loads from Transfer Stations are screened using the same procedure as loads from individual customers. To aid Transfer Stations to provide the necessary paperwork, Load Manifests and Multipoint Pickup Forms were developed. Loads from Transfer Stations must be all of one type of material (i.e. all date-stamped OR all non-date stamped). Mixed loads are accepted only as non-date stamped and must be accompanied by analytical paperwork. Note that the Manifests require a listing of the source addresses for all portions of the load. This would mean that for load containing non-date stamped materials – analytical reports must be provided for each portion of the load.

As loads received from Transfer Station are generally large, they will be tipped into a “Pod” for additional inspection and sampling, if warranted.

Long Term Project:

In some cases, a demolition project may occur over an extended period of time (i.e. a Long Term Project). If such a project follows the standard procedure, analytical data and clearance letters would need to be provided with each and every load. This is considered to be a significant burden to both the customer and New West Gypsum Recycling. To address this, the Long Term Project acceptance system was developed.

To enable a Long Term Project, the customer advises the Scale Clerk that they are seeking approval for acceptance of materials from a Long Term Project. To be accepted, there:

- Must be at least five loads from the same address;
- All loads must be the same (i.e. all date or all non-dated materials); and,
- If the loads are non-dated materials:
 - The Hazardous Building Materials Assessment indicates all potentially asbestos containing drywall component materials are non-detect for asbestos; or,
 - A Clearance Letter is included that indicates that all materials that were identified in the Hazardous Building Materials Assessment have been removed.
- The Plant Manager or designate approved all Long Term Projects following a review of the Hazardous Building Materials Assessment and Clearance letter (if any).

If these conditions are met, the Scale Clerk enters the Long Term Project Number on the Long Term Project List and gives the customer multiple copies of the Long Term Project Declaration form. On the first copy of the Long Term Project Declaration, the Scale Clerk enters the Long Term Project Number.

The first and all following loads are subjected to inspection as indicated in the Decision Tree. All loads received under the Long Term Project must have the Long Term Project Number entered on the Long Term Load Declaration. A tally of loads received is also maintained on the Long Term Load Project List.

Analytical Reports:

Analytical Reports:

- Must be less than 6 months old (unless approved by the Plant Manager or designate);
- Be provided at the time the load is received; and,
- Must indicate the address of the home / building where the samples were obtained.

Clearance Letters:

Clearance Letters must:

- Meet the WCB requirements;
- Must reference the Hazardous Building Assessment on which the abatement project was based;
- Include the property address; and,
- Must indicate that all asbestos containing materials identified in the Hazardous Building Materials Assessment were removed.

A sample Clearance Letter has been developed and can be provided to customers.

Outcomes:

When a customer leaves the facility, one of the following applies:

- The customer's information is entered on the Reject List;
- The customer receives a Load Rejection Form and a \$0 invoice. A copy of the Load Rejection Form is filed with the office copy of the invoice;
- The customer leaves after paying their invoice and leaves a copy of the Load Declaration with the office copy of the invoice;
- The customer leaves after paying their invoice and leaves a copy of their analytical results, Load Declaration with the office copy of the invoice; or,
- The customer leaves after paying their invoice and leaves a copy of their Hazardous Building Materials Assessment, Clearance Letter and Load Declaration with the office copy of the invoice.

These are the ONLY sets of paperwork that are possible under this procedure.



New West Gypsum Recycling Inc.

38 Vulcan Street
New Westminster, BC
V3L 5T7
(604) 534-9925

DRYWALL DECLARATION & ACKNOWLEDGEMENT

Drivers Name: _____ Company Name: _____

Vehicle Plate Numbers: _____

Address where drywall originated: _____
Street address and City

Driver verifies that the above information is correct: _____
Driver's Signature

Materials in the load include (check only one):

- ☐ Only date stamped board
- ☐ Non-Date stamped board without Joint Compound or Texture Coating
- ☐ Non-Date Stamped Board or a Mixture of Date Stamped and Non-Date Stamped Board with analytical results that are less than six months old or board following an abatement project with a Hazardous Building Materials Assessment and Clearance Letter

Continued on other side



New West Gypsum Recycling Inc.

38 Vulcan Street
New Westminster, BC
V3L 5T7
(604) 534-9925

DRYWALL DECLARATION & ACKNOWLEDGEMENT

Drivers Name: _____ Company Name: _____

Vehicle Plate Numbers: _____

Address where drywall originated: _____
Street address and City

Driver verifies that the above information is correct: _____
Driver's Signature

Materials in the load include (check only one):

- ☐ Only date stamped board
- ☐ Non-Date stamped board without Joint Compound or Texture Coating
- ☐ Non-Date Stamped Board or a Mixture of Date Stamped and Non-Date Stamped Board with analytical results that are less than six months old or board following an abatement project with a Hazardous Building Materials Assessment and Clearance Letter

Continued on other side

Continued from other side

Representations & Warranties

The delivery and dumping of asbestos containing material poses a serious health risk to workers and will result in significant financial damages to New West Gypsum Recycling (BC) Inc. New West Gypsum Recycling (BC) Inc. is relying on the accuracy and the customer's declaration in accepting drywall materials for recycling.

By signing this form, the customer agrees to accept liability for all costs incurred by New West Gypsum Recycling (BC) Inc. (including business interruption losses and losses in profits) that result from an incorrect declaration regarding the origin and content of the material as declared above and that the minimum liability for making such an incorrect declaration will be a payment of \$10,000 plus all clean-up costs. New West Gypsum Recycling (BC) Inc. further reserves the right to ban any customer from disposing of drywall to any of its facilities.

Authorized Signature

Date

Print Name

For NWGR use only:

Manufacturer's Date Stamp observed & verified: ☐ Date Observed: _____

Plate Confirmed: ☐

Analytical Report Received: ☐ Analytical Report Date: _____

All Drywall Related Materials: None Detect: ☐ Detected BUT Clearance Letter Received: ☐

No Potential ACMs Present: ☐

Load Accepted: ☐ Rejected: ☐ Tipped to: ☐ Dated Pile ☐ Non-dated pile

NWGR Pre-Entry Inspector: _____ Date: _____ (Optional)

NWGR Yard Inspector: _____ Date: _____ (Required)

Continued from other side

Representations & Warranties

The delivery and dumping of asbestos containing material poses a serious health risk to workers and will result in significant financial damages to New West Gypsum Recycling (BC) Inc. New West Gypsum Recycling (BC) Inc. is relying on the accuracy and the customer's declaration in accepting drywall materials for recycling.

By signing this form, the customer agrees to accept liability for all costs incurred by New West Gypsum Recycling (BC) Inc. (including business interruption losses and losses in profits) that result from an incorrect declaration regarding the origin and content of the material as declared above and that the minimum liability for making such an incorrect declaration will be a payment of \$10,000 plus all clean-up costs. New West Gypsum Recycling (BC) Inc. further reserves the right to ban any customer from disposing of drywall to any of its facilities.

Authorized Signature

Date

Print Name

For NWGR use only:

Manufacturer's Date Stamp observed & verified: ☐ Date Observed: _____

Plate Confirmed: ☐

Analytical Report Received: ☐ Analytical Report Date: _____

All Drywall Related Materials: None Detect: ☐ Detected BUT Clearance Letter Received: ☐

No Potential ACMs Present: ☐

Load Accepted: ☐ Rejected: ☐ Tipped to: ☐ Dated Pile ☐ Non-dated pile

NWGR Pre-Entry Inspector: _____ Date: _____ (Optional)

NWGR Yard Inspector: _____ Date: _____ (Required)



New West Gypsum Recycling Inc.

38 Vulcan Street
New Westminster, BC
V3L 5T7
(604) 534-9925

DRYWALL DECLARATION & ACKNOWLEDGEMENT

Drivers Name: _____

Company Name: _____

Vehicle Plate Numbers: _____

Address where drywall originated: _____
Street address and City

Driver verifies that the above information is correct: _____
Driver's Signature

Materials in the load include (check only one):

- ☐ Only date stamped board
- ☐ Non-Date Stamped Board with No joint compound or Texture Coating
- ☐ Non-Date Stamped Board or a Mixture of Date Stamped and Non-Date Stamped Board with analytical results that are less than six months old or board following an abatement project with a Hazardous Building Materials Assessment and Clearance Letter

Representations & Warranties

The delivery and dumping of asbestos containing material poses a serious health risk to workers and will result in significant financial damages to New West Gypsum Recycling (BC) Inc. New West Gypsum Recycling (BC) Inc. is relying on the accuracy and the customer's declaration in accepting drywall materials for recycling.

By signing this form, the customer agrees to accept liability for all costs incurred by New West Gypsum Recycling (BC) Inc. (including business interruption losses and losses in profits) that result from an incorrect declaration regarding the origin and content of the material as declared above and that the minimum liability for making such an incorrect declaration will be a payment of \$10,000 plus all clean-up costs. New West Gypsum Recycling (BC) Inc. further reserves the right to ban any customer from disposing of drywall to any of its facilities.

Authorized Signature

Date

Print Name

For NWGR use only:

Manufacturer's Date Stamp observed & verified: ☐ Date Observed: _____

Plate Confirmed: ☐

Analytical Report Received: ☐ Analytical Report Date: _____

All Drywall Related Materials: None Detect: ☐ Detected BUT Clearance Letter Received: ☐
No Potential ACMs Present: ☐

Load Accepted: ☐ Rejected: ☐ Tipped to: ☐ Dated Pile ☐ Non-dated pile

NWGR Pre-Entry Inspector: _____ Date: _____ (Optional)

NWGR Yard Inspector: _____ Date: _____ (Required)



New West Gypsum Recycling Inc.

38 Vulcan Street
New Westminster, BC
V3L 5T7
(604) 534-9925

纸面石膏板材的申报与确认

司机的名字: _____

公司名称: _____

车牌号码: _____

石膏板在哪里拆除收集的: _____

街道地址和城市

司机确认上述信息是正确的: _____

司机签名

运载的材料包含(仅选下列一项)

☐ 仅仅是加盖戳 / 生产日期的建筑墙板

☐ 未标明生产日期的建筑墙板 或者是

有生产日期和无日期标记的建筑墙板混在一起, 但附有不超过六个月的实验室分析报告, 或者是
已经完成石棉清除作业后拆除的建筑墙板, 且附有危险建筑材料的评估和认证函。

声明和保证

运送及倾卸含有毒物质石棉的石膏板材将会对我公司员工构成严重的健康风险, 同时会对我公司造成重大的经济损失。我公司完全依赖于客户您声明的准确信息来接受石膏板材料用于回收处理。

签署这项声明意味着, 如果由于客户对上述石膏板材料的来源和内容提供不正确信息而导致我公司蒙受额外支出, 该客户同意有责任赔偿我公司所有损失 (包括业务中断损失和利润损失)。

因不正确申报导致的最低的责任是支付10,000加币外加所有清理费用, 并且依据情况的进一步发展, 我公司有权禁止该客户在我公司场地设施上倾卸废旧石膏板材。

授权签字

日期

For NWGR use only:

Manufacturer's Date Stamp observed & verified: ☐ Date Observed: _____

Plate Confirmed: ☐ Tipped to: ☐ Dated Pile ☐ Non-dated pile

Analytical Report Received: ☐ Analytical Report Date: _____

All Samples "None Detected": ☐ No Potential ACMs Present: ☐

Load Accepted: ☐ Rejected: ☐

NWGR Pre-Entry Operator: _____ Date: _____ (Optional)

NWGR Yard Operator: _____ Date: _____ (Required)



New West Gypsum Recycling Inc.

38 Vulcan Street
New Westminster, BC
V3L 5T7
(604) 534-9925

DRYWALL DECLARATION & ACKNOWLEDGEMENT

ਡਰਾਈਵਰ ਦਾ ਨਾਮ: - _____

ਕੰਪਨੀ ਦਾ ਨਾਮ: - _____

ਵਾਹੀਕਲ ਪਲੇਟ ਨੰਬਰ: - _____

ਜਿੱਥੋਂ ਡਰਾਈਵਾਲ ਆਈ (ਉਪਜੀ) ਦਾ ਪਤਾ: - _____

ਗਲੀ ਅਤੇ ਸ਼ਹਿਰ ਦਾ ਪਤਾ _____

ਹੇਠ ਲਿਖੀ ਲੋਡ ਸਮਗਰੀ ਵਿੱਚੋਂ ਕੋਵਲ ਇੱਕ ਚੁੱਸੋ:-

- ☐ ਬੋਰਡ ਉੱਪਰ ਤਾਰੀਖ ਅਤੇ ਮੋਹਰ।
- ☐ ਬਿਨਾਂ ਤਾਰੀਖ ਬੋਰਡ ਮੋਹਰ ਜਾਂ ਮਿਸ਼ਰਣ ਦੀ ਤਾਰੀਖ ਅਤੇ ਬੋਰਡ ਮੋਹਰ ਅਤੇ ਬਿਨਾਂ ਤਾਰੀਖ ਬੋਰਡ ਮੋਹਰ ਜਿਸ ਵਿੱਚ ਵਿਸਥਾਰ ਸਹਿਤ ਨਤੀਜੇ ਦਰਸਾਏ ਹੋਣ ਜੋ ਛੇ ਮਹੀਨਿਆਂ ਤੋਂ ਘੱਟ ਪੁਰਾਣੇ ਹੋਣ।

ਵਰਨਣ ਅਤੇ ਜਾਮਨੀਆਂ (ਵਾਰੰਟੀ):

ਜੋ ਮੈਟੀਰੀਅਲ ਡਿਪਿੰਗ ਵਾਸਤੇ ਡਲਿਵਰ ਕਰਨਾ ਹੈ, ਉਸ ਵਿੱਚ ਐਸਬਸਟੋਸ (ਰਸਾਇਣ) ਹੁੰਦਾ ਹੈ ਜੋ ਕਿ ਕਾਮਿਆਂ ਦੀ ਸਿਹਤ ਲਈ ਬਹੁਤ ਖਤਰਨਾਕ ਹੈ ਅਤੇ ਇਸ ਦੇ ਪ੍ਰਣਾਮ ਸਦਕਾ ਨਿਊ ਵੈਸਟ ਜ਼ਿਪਸਮ ਰੀਸਾਇਕਲਿੰਗ (ਬੀ.ਸੀ.) ਲਿਮਟਿਡ ਨੂੰ ਕਾਫੀ ਭਾਰੀ ਰਾਸ਼ੀ ਦਾ ਹਰਜ਼ਾਨਾ ਦੇਣਾ ਪੈ ਸਕਦਾ ਹੈ। ਨਿਊ ਵੈਸਟ ਜ਼ਿਪਸਮ ਰੀਸਾਇਕਲਿੰਗ (ਬੀ.ਸੀ.) ਲਿਮਟਿਡ ਸਿਰਫ਼ ਗਾਹਕ ਦੀ ਮੈਟੀਰੀਅਲ ਸੰਬੰਧੀ ਦਿੱਤੀ ਹੋਈ ਜਾਣਕਾਰੀ 'ਤੇ ਹੀ ਡਰਾਈਵਾਲ ਲੈਂਦੇ ਸਮੇਂ ਭਰੋਸਾ ਕਰਦੀ ਹੈ।

ਇਸ ਫਾਰਮ 'ਤੇ ਸਹੀ ਪਾਉਣ ਉਪਰੰਤ ਗਾਹਕ ਹਰ ਤਰ੍ਹਾਂ ਦੀ ਦੇਣਦਾਰੀ ਅਤੇ ਕੋਈ ਵੀ ਹਰਜ਼ਾਨਾ ਜਾਂ ਲਾਗਤ ਜਿਹੜੀ ਕਿ ਨਿਊ ਵੈਸਟ ਜ਼ਿਪਸਮ ਰੀਸਾਇਕਲਿੰਗ (ਬੀ.ਸੀ.) ਲਿਮਟਿਡ ਨੂੰ (ਜਿਸ ਵਿੱਚ ਵਿਉਪਾਰ 'ਚ ਵਿਘਨ ਪੈਣ ਕਰਕੇ ਹੋਇਆ ਨੁਕਸਾਨ ਜਾਂ ਹੋਰ ਮੁਨਾਫ਼ੇ ਵਿੱਚ ਜਿੰਨੇ ਵੀ ਨੁਕਸਾਨ ਹੋਣਗੇ) ਜਿਹੜਾ ਵੀ ਗਾਹਕ ਦੁਆਰਾ ਗਲਤ ਐਲਾਨਨਾਮੇਂ ਤੋਂ ਪੈਦਾ ਹੋਣਗੇ ਅਤੇ ਮੈਟੀਰੀਅਲ ਦੇ ਵਿੱਚ ਅਸਾਨੂੰ ਸੰਬੰਧੀ ਦਿੱਤੀ ਗਲਤ ਜਾਣਕਾਰੀ (ਐਲਾਨਨਾਮੇਂ) ਜਿਸ ਦੀ ਘੱਟੋ ਘੱਟ ਦੇਣਦਾਰੀ ਇਸ ਗਲਤ ਐਲਾਨ ਲਈ 10 ਹਜ਼ਾਰ ਡਾਲਰ ਅਤੇ ਉੱਥੋਂ ਦੀ ਜਗ੍ਹਾ ਦੀ ਸਾਫ਼ ਸਫ਼ਾਈ ਦਾ ਖਰਚਾ ਅਲੱਗ ਹੋਵੇਗਾ। ਨਿਊ ਵੈਸਟ ਜ਼ਿਪਸਮ ਰੀਸਾਇਕਲਿੰਗ (ਬੀ.ਸੀ.) ਲਿਮਟਿਡ ਕਿਸੇ ਵੀ ਗਾਹਕ ਨੂੰ ਅੱਗੇ ਤੋਂ ਡਰਾਈਵਾਲ ਸੁੱਟਣ ਤੋਂ ਰੋਕਣ ਦਾ ਹੱਕ ਰਾਖਵਾਂ ਰੱਖਦੀ ਹੈ।

ਅਧਕਾਰਿਤ ਹਸਤਾਖਰ _____

ਤਾਰੀਖ _____

For NWGR use only:

Manufacturer's Date Stamp observed & verified: ☐ Date Observed: _____

Plate Confirmed: ☐ Tipped to: ☐ Dated Pile ☐ Non-dated pile

Analytical Report Received: ☐ Analytical Report Date: _____

All Samples "None Detected": ☐ No Potential ACMs Present: ☐

Load Accepted: ☐ Rejected: ☐

NWGR Pre-Entry Operator: _____ Date: _____ (Optional)

NWGR Yard Operator: _____ Date: _____ (Required)



New West Gypsum Recycling Inc.

38 Vulcan Street
New Westminster, BC
V3L 5T7
(604) 534-9925

Vách thạch cao KHAI & LỜI CẢM ƠN

Tên lái xe: _____

Tên công ty: _____

tấm xe: _____

Địa chỉ nơi vách thạch cao có nguồn gốc: _____

Địa chỉ đường phố, thành phố _____

Lái xe xác nhận rằng thông tin trên là chính xác: _____

Chữ ký của lái xe _____

Vật liệu trong tải bao gồm (kiểm tra chỉ có một):

- ☐ Chỉ đóng dấu ngày hội đồng quản trị
- ☐ Non - Ngày Stamped trị hoặc một hỗn hợp của ngày đóng dấu và Non - Ngày Stamped Hội đồng với kết quả phân tích đó là ít hơn sáu tháng tuổi hoặc hội đồng quản trị sau một dự án xử lý chất thải với một vật liệu xây dựng và đánh giá

Đại diện và bảo hành

Việc phân phối và bán phá giá của amiăng có chứa vật liệu đặt ra một nguy cơ sức khỏe nghiêm trọng cho người lao động và sẽ dẫn đến thiệt hại tài chính đáng kể cho New West Gypsum Tái chế (BC) Inc. New West Gypsum Tái chế (BC) Inc là dựa trên sự chính xác và khai báo của khách hàng trong việc chấp nhận các vật liệu tường thạch cao để tái chế.

Bằng cách đăng ký hình thức này, khách hàng đồng ý chấp nhận trách nhiệm đối với tất cả các chi phí phát sinh bởi New West Gypsum Tái chế (BC) Inc (bao gồm cả tổn thất gián đoạn kinh doanh thua lỗ và lợi nhuận) là kết quả từ một khai sai về nguồn gốc và nội dung của các tài liệu như khai báo bên trên và các trách nhiệm pháp lý tối thiểu để thực hiện một tuyên bố không chính xác như vậy sẽ là một khoản thanh toán của \$ 10,000 cộng với tất cả các chi phí làm sạch. New West Gypsum Tái chế (BC) Inc cũng bảo lưu quyền cấm mọi khách hàng từ việc xử lý vách thạch cao cho bất kỳ cơ sở của nó .

Chữ ký ủy quyền _____

Hẹn hò _____

Chữ ký _____

For NWGR use only:

Manufacturer's Date Stamp observed & verified: ☐ Date Observed: _____

Plate Confirmed: ☐ Tipped to: ☐ Dated Pile ☐ Non-dated pile

Analytical Report Received: ☐ Analytical Report Date: _____

All Samples "None Detected": ☐ No Potential ACMs Present: ☐

Load Accepted: ☐ Rejected: ☐

NWGR Pre-Entry Operator: _____ Date: _____ (Optional)

NWGR Yard Operator: _____ Date: _____ (Required)



New West Gypsum Recycling Inc.

38 Vulcan Street
New Westminster, BC
V3L 5T7
(604) 534-9925

LONG TERM PROJECT NOTIFICATION DRYWALL DECLARATION & ACKNOWLEDGEMENT

A completed and signed copy of this form must accompany loads from Long Term Projects. Any analytical reports, hazardous building materials assessment reports and clearance letters must be included with the first load.

Company Name: _____ Long Term Project Number: _____
/Contractor Assigned by New West Gypsum Recycling¹

Address where drywall originated: _____
Street address and City

Project Duration: _____ to _____

Expected Volume of Waste Drywall: _____ (minimum 5 loads)

Materials in the loads will be comprised of (check only one):

- ☐ Only date stamped board
- ☐ Non-Date Stamped Board or a Mixture of Date Stamped and Non-Date Stamped Board with analytical results that are less than six months old or board following an abatement project with a Hazardous Building Materials Assessment and Clearance Letter

Representations & Warranties

The delivery and dumping of asbestos containing material poses a serious health risk to workers and will result in significant financial damages to New West Gypsum Recycling (BC) Ltd. New West Gypsum Recycling (BC) Ltd. is relying on the accuracy and the customer's declaration in accepting drywall materials for recycling.

By signing this form, the customer agrees to accept liability for all costs incurred by New West Gypsum Recycling (BC) Ltd. (including business interruption losses and losses in profits) that result from an incorrect declaration regarding the origin and content of the material as declared above and that the minimum liability for making such an incorrect declaration will be a payment of \$10,000 plus all clean-up costs. New West Gypsum Recycling (BC) Ltd. further reserves the right to ban any customer from disposing of drywall to any of its facilities.

Authorized Signature

Date

Print Name

¹ The Long Term Project Number is assigned by New West Gypsum (BC) Ltd. ("NWGR") when the Load Declaration and details of the first load are provided to the NWGR. The Long Term Project Number must be entered on the Long Term Project Notification & Drywall Declaration that accompanies each load from the project.

For NWGR use only:

Manufacturer's Date Stamp observed & verified: ☐ Date Observed: _____

Plate Confirmed: ☐ Tipped to: ☐ Dated Pile ☐ Non-dated pile

Analytical Report Received: ☐ Analytical Report Date: _____

All Samples "None Detected": ☐

Load Accepted: ☐ Rejected: ☐

NWGR Pre-Entry Operator: _____ Date: _____ (Optional)

NWGR Yard Operator: _____ Date: _____ (Required)



New West Gypsum Recycling Inc.

38 Vulcan Street
New Westminster, BC
V3L 5T7
(604) 534-9925

LONG TERM PROJECT LIST

Date	Company Name	Site Address	Start Date	End Date	Expected # of Loads	Load Tally	LTP # yyyy-### eg 2015-001

**New West Gypsum Recycling Inc.**

38 Vulcan Street
New Westminster, BC
V3L 5T7
(604) 534-9925

TRANSFER STATION LOAD MANIFEST

Transfer Station Information:

Page: ____ of ____

Company Name:		Transfer Station Location (Address):	
For Loads Received (dates):	From:	To:	
Material Type:	Date Stamped Board: <input type="checkbox"/>	None Date Stamped Board with Analytical Results ¹ : <input type="checkbox"/>	
Loads can only contain one Material Type.			

Load Content Information:

Source Address ²		Customer ID or Name	Analytical Report		
Street	City		Required	Received	Report Date ³
			<input type="checkbox"/>	<input type="checkbox"/>	
			<input type="checkbox"/>	<input type="checkbox"/>	
			<input type="checkbox"/>	<input type="checkbox"/>	
			<input type="checkbox"/>	<input type="checkbox"/>	
			<input type="checkbox"/>	<input type="checkbox"/>	
			<input type="checkbox"/>	<input type="checkbox"/>	

- Notes: 1- An analytical report from an Accredited Laboratory is required showing "None Detect" for all potentially asbestos containing material in the load must be attached to this Manifest for all portions of the load containing board that is not date stamped.
- 2 - The Source Address must be listed on analytical reports.
- 3 - All analytical must be less than six months old.

Representations & Warranties

The delivery and dumping of asbestos containing material poses a serious health risk to workers and will result in significant financial damages to New West Gypsum Recycling (BC) Inc. New West Gypsum Recycling (BC) Inc. is relying on the accuracy and the customer's declaration in accepting drywall materials for recycling.

By signing this form, the customer agrees to accept liability for all costs incurred by New West Gypsum Recycling (BC) Inc. (including business interruption losses and losses in profits) that result from an incorrect declaration regarding the origin and content of the material as declared above and that the minimum liability for making such an incorrect declaration will be a payment of \$10,000 plus all clean-up costs. New West Gypsum Recycling (BC) Inc. further reserves the right to ban any customer from disposing of drywall to any of its facilities.

Authorized Signature_____
Date_____
Print Name**For NWGR office use only:**Manufacturer's Date Stamp observed & verified: ☐All Samples "None Detected": ☐Load Accepted: ☐ Rejected: ☐

NWGR: _____ Date: _____

November 10, 2015
Revised: November 30, 2015

**New West Gypsum Recycling Inc.**

38 Vulcan Street
New Westminster, BC
V3L 5T7
(604) 534-9925

MULTIPOINT PICK-UP MANIFEST

Transfer Station Information:

Trucking Company Name:		Drivers Name:	
Truck Plate Number:			
Material Type:	Date Stamped Board: <input type="checkbox"/>	None Date Stamped Board with Analytical Results¹: <input type="checkbox"/>	
Loads can only contain one Material Type.			

Load Content Information:

Source Address ²		Analytical Report		
Street	City	Required	Received	Report Date ³
		<input type="checkbox"/>	<input type="checkbox"/>	
		<input type="checkbox"/>	<input type="checkbox"/>	
		<input type="checkbox"/>	<input type="checkbox"/>	
		<input type="checkbox"/>	<input type="checkbox"/>	
		<input type="checkbox"/>	<input type="checkbox"/>	
		<input type="checkbox"/>	<input type="checkbox"/>	

- Notes: 1- An analytical report from an Accredited Laboratory is required showing "None Detect" for all potentially asbestos containing materials in the load must be attached to this Manifest for all portions of the load containing board that is not date stamped.
2 - The Source Address must be listed on analytical reports.
3 - All analytical must be less than six months old.

Representations & Warranties

The delivery and dumping of asbestos containing material poses a serious health risk to workers and will result in significant financial damages to New West Gypsum Recycling (BC) Inc. New West Gypsum Recycling (BC) Inc. is relying on the accuracy and the customer's declaration in accepting drywall materials for recycling.

By signing this form, the customer agrees to accept liability for all costs incurred by New West Gypsum Recycling (BC) Inc. (including business interruption losses and losses in profits) that result from an incorrect declaration regarding the origin and content of the material as declared above and that the minimum liability for making such an incorrect declaration will be a payment of \$10,000 plus all clean-up costs. New West Gypsum Recycling (BC) Inc. further reserves the right to ban any customer from disposing of drywall to any of its facilities.

Authorized Signature

Date

Print Name**For NWGR office use only:**All Samples "None Detected": ☐Load Accepted: ☐ Rejected: ☐

NWGR: _____ Date: _____

November 10, 2015
Revised: November 16, 2015



New West Gypsum Recycling Inc.

38 Vulcan Street
New Westminster, BC
V3L 5T7
(604) 534-9925

DRYWALL REJECTION

Company Name: _____ Source Address: _____

The load of drywall delivered to New West Gypsum Recycling Inc on _____ in the vehicle with plate number(s) _____ was not accepted for disposal.

The load contained non-date stamped materials but the load was rejected for the following reasons:

- ☐ No analytical accompanied the load.
- ☐ The analytical results that accompanied the load were too old.
- ☐ The analytical indicated asbestos was detected not no Clearance Letter was provided.
- ☐ The analytical results did not match the load (i.e. not all potentially asbestos containing materials were tested).
- ☐ The addresses where the load was picked up, shown on the analytical or listed in the Clearance Letter do not match.
- ☐ The Clearance Letter does not indicate that all items found to contain Asbestos in the building assessment as asbestos containing were removed.
- ☐ Other: _____

The load will not be accepted at New West Gypsum Recycling Inc. until the indicated issues are resolved to the sole satisfaction of New West Gypsum Recycling Inc.

Yard Operator

Date

Driver's Initials



New West Gypsum Recycling Inc.

38 Vulcan Street
New Westminster, BC
V3L 5T7
(604) 534-9925

DRYWALL REJECTION

Company Name: _____ Source Address: _____

The load of drywall delivered to New West Gypsum Recycling Inc on _____ in the vehicle with plate number(s) _____ was not accepted for disposal.

The load contained non-date stamped materials but the load was rejected for the following reasons:

- ☐ No analytical accompanied the load.
- ☐ The analytical results that accompanied the load were too old.
- ☐ The analytical indicated asbestos was detected not no Clearance Letter was provided.
- ☐ The analytical results did not match the load (i.e. not all potentially asbestos containing materials were tested).
- ☐ The addresses where the load was picked up, shown on the analytical or listed in the Clearance Letter do not match.
- ☐ The Clearance Letter does not indicate that all items found to contain Asbestos in the building assessment as asbestos containing were removed.
- ☐ Other: _____

The load will not be accepted at New West Gypsum Recycling Inc. until the indicated issues are resolved to the sole satisfaction of New West Gypsum Recycling Inc.

Yard Operator

Date

Driver's Initials

Example Clearance Letter

Date Prepared:			
Property Owner or Agent:		Email:	
Owner Company Name:		Telephone:	
Clearance Letter Prepared By:		Email:	
		Telephone:	
Name:		Email:	
		Telephone:	

Property Address:			
Hazardous Buildings Materials Assessment Report Details			
Report Title:			
Report Completed By:			
Report Date:			
Abatement Contractor Information			
Company Name:		Email:	
		Telephone:	
Project Manager Name:		Email:	
		Telephone:	
Project Date:		To	
NOP-A Number:			

Details of the abatement project, include details of materials removed as described in the Assessment report. Attach the scope of work from your contract, if available. Also include any materials identified in Assessment report that were not removed.

Final visual inspection completed by			
Company Name:		Email:	
		Telephone:	
Name:		Email:	
		Telephone:	

This is to certify that the abatement project at the above referenced address has been completed following WorkSafeBC procedures, in accordance with the requirements Occupational Health and Safety Regulation and the requirements of regulations of the BC Ministry of Environment. Further, it is our opinion that the structure no longer contains Asbestos.

Signature:		Print Name:	
------------	--	-------------	--

Attached Documents:

NOP-A:	<input type="checkbox"/>	Hazardous Buildings Materials Assessment Report	<input checked="" type="checkbox"/>
Risk Assessment:	<input type="checkbox"/>	(Required):	
Other:	<input type="checkbox"/>	Waste Manifests:	<input type="checkbox"/>